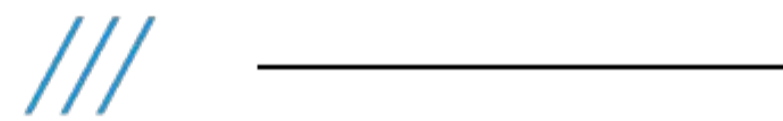




# Kayrros: Satellite-based emissions measurements for Finance



Tokyo Financial Award 2023

The information contained in this document is confidential, privileged and only for the use of the intended recipient and may not be used, published or redistributed without the prior written consent of Kayrros SAS.



# Kayrros Vision & Missions

---

Kayrros vision is to **change global climate governance** guided by the principle:  
**What Gets Measured Gets Managed**

Our products center around three missions

Reducing greenhouse gas emissions

---

Protecting nature and biodiversity

---

Managing the energy transition

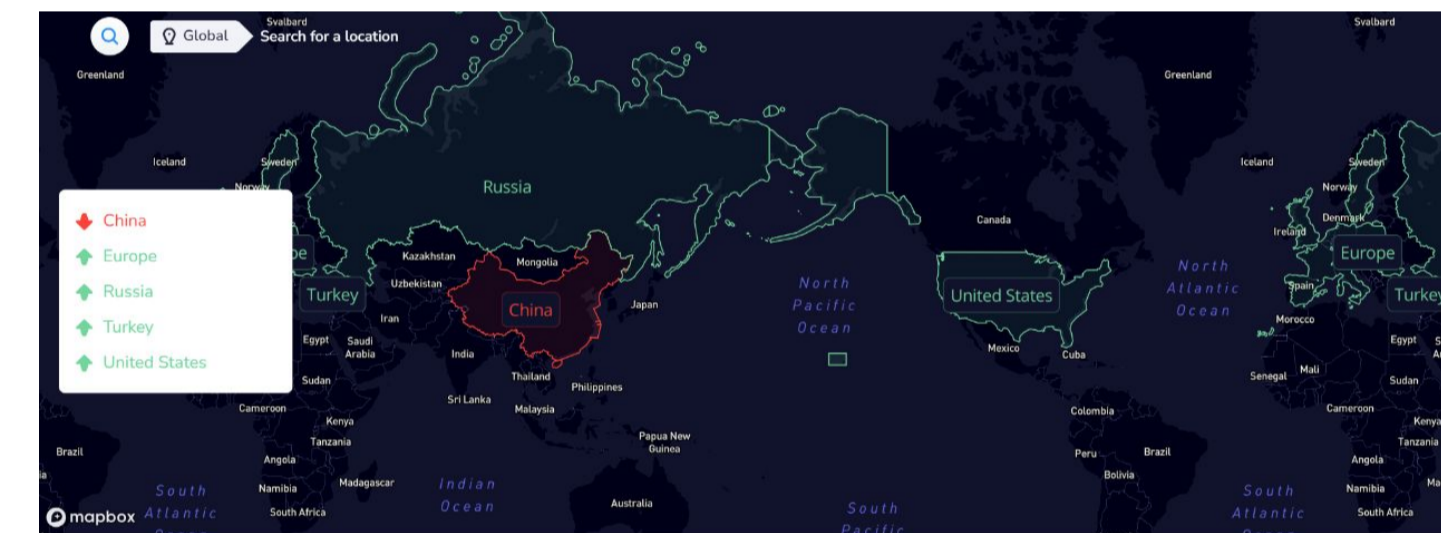
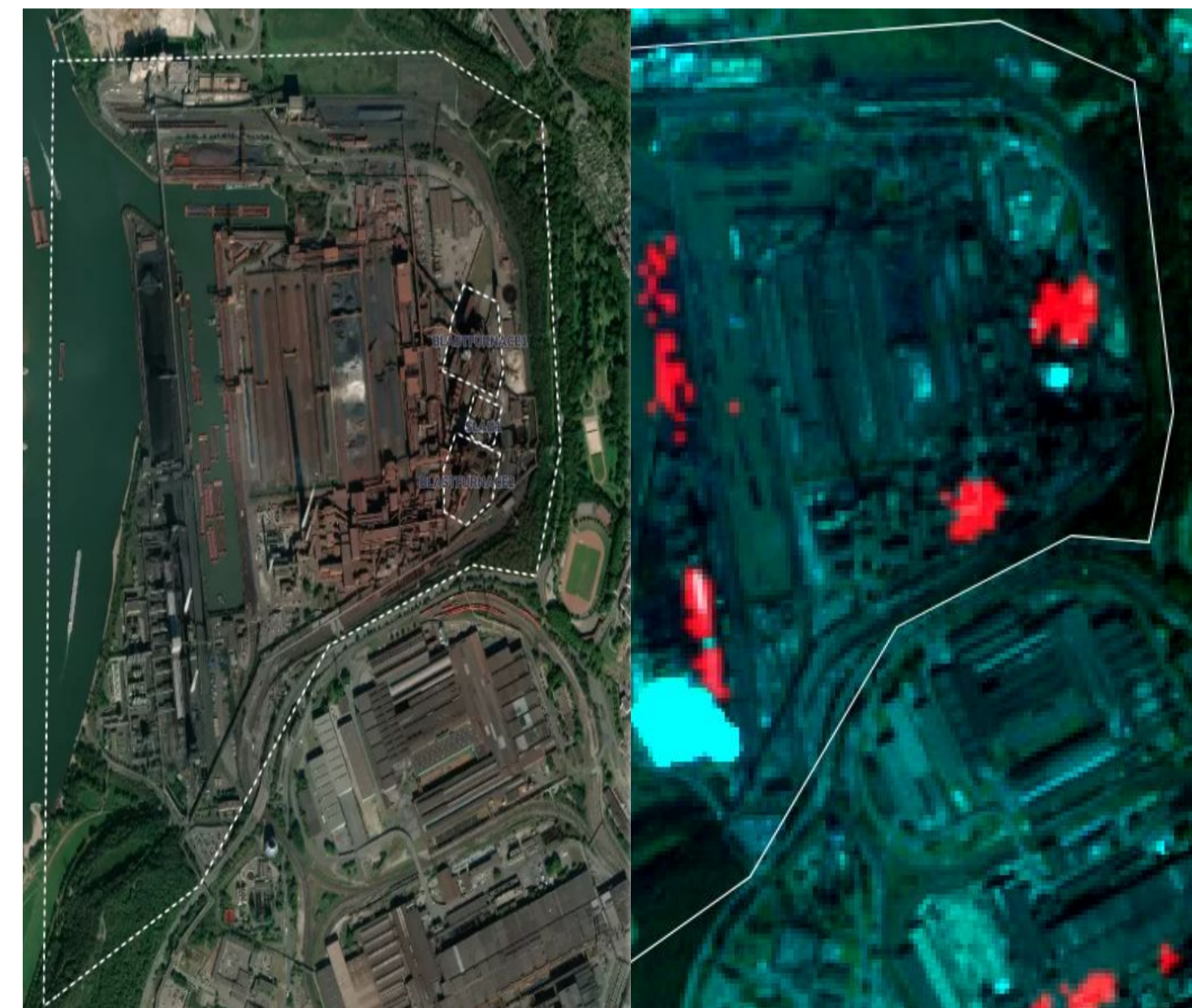
Technology

# Satellite-Based Environmental and Economic Insights

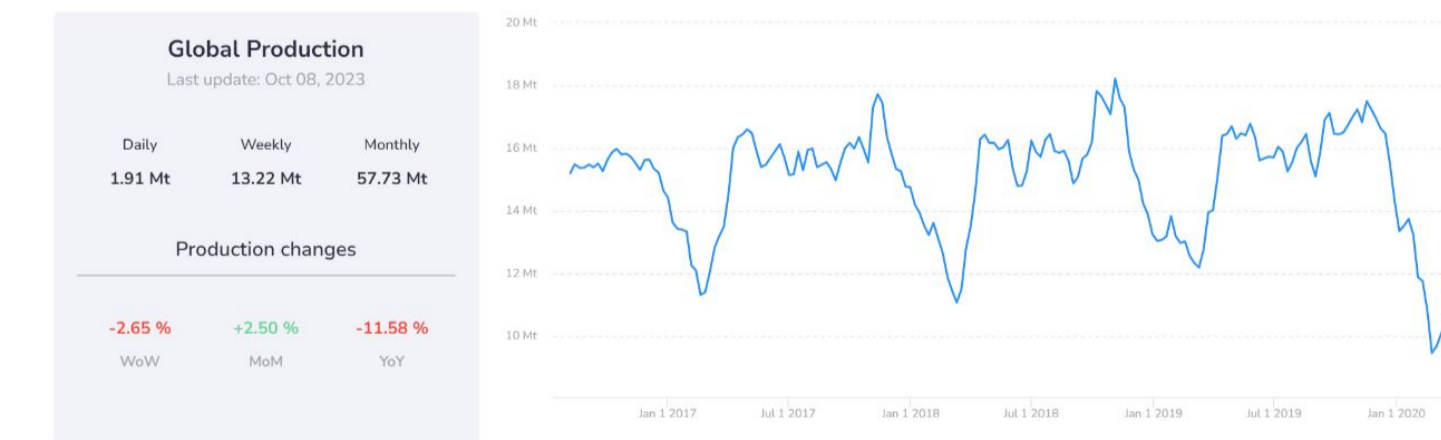
Leveraging Kayrros Global Asset Database with asset-to-company attribution

Extrapolating asset-level environmental/economic indicators

Company-level aggregation + sector-level benchmarking



Cement Production

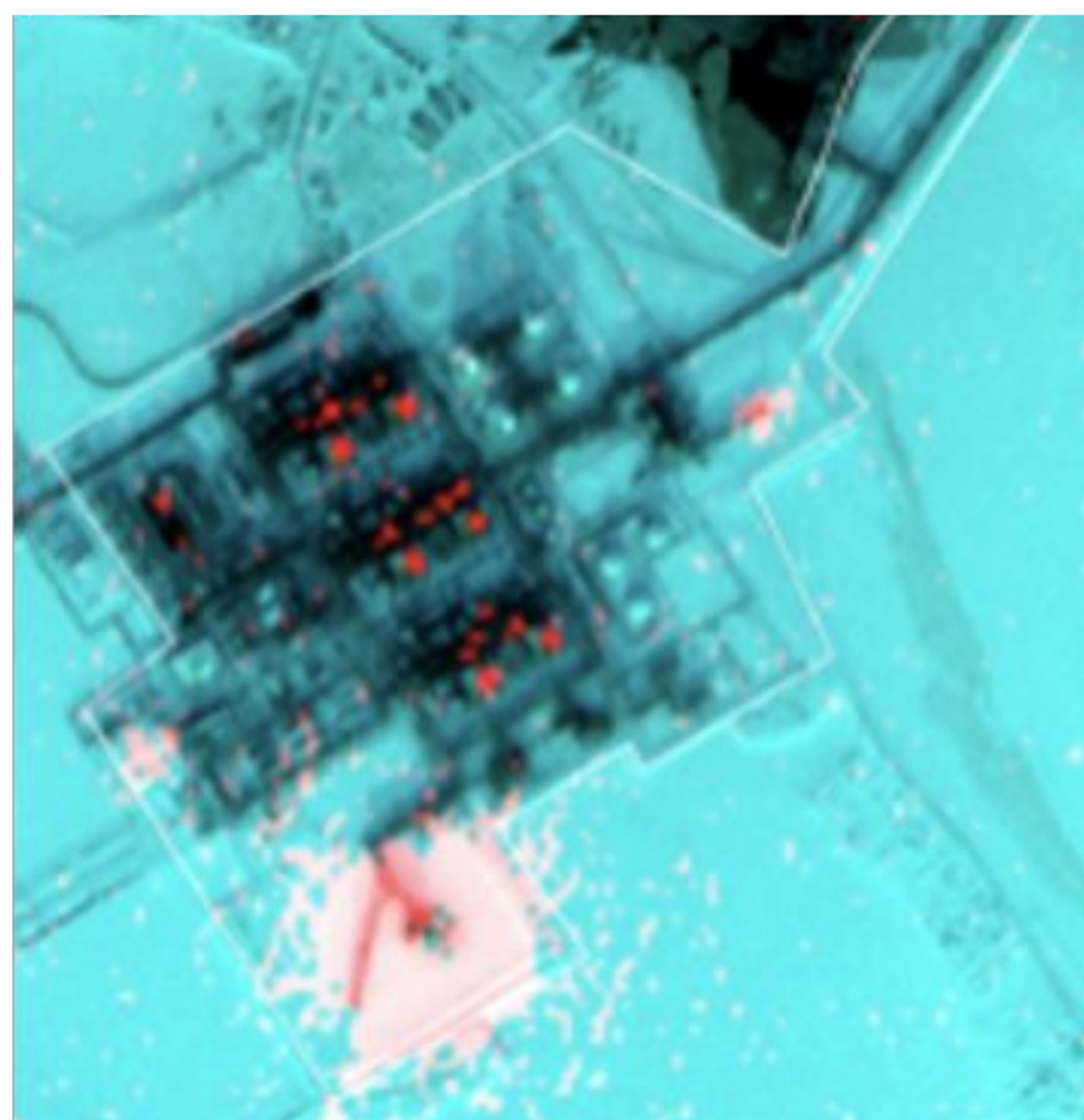


Production Breakdown

Region	Production	W-o-W Change
China	6.33 Mt	-8.33 % ↓

# Financial players use Kayrros technology...

Tracking plant activity



Solar Project completions



Emissions monitoring



**World leading asset managers & hedge funds use Kayrros datasets for public and private markets**

Asset classes: Commodities, Equities, Real Assets, Fixed Income, Voluntary Carbon Markets...

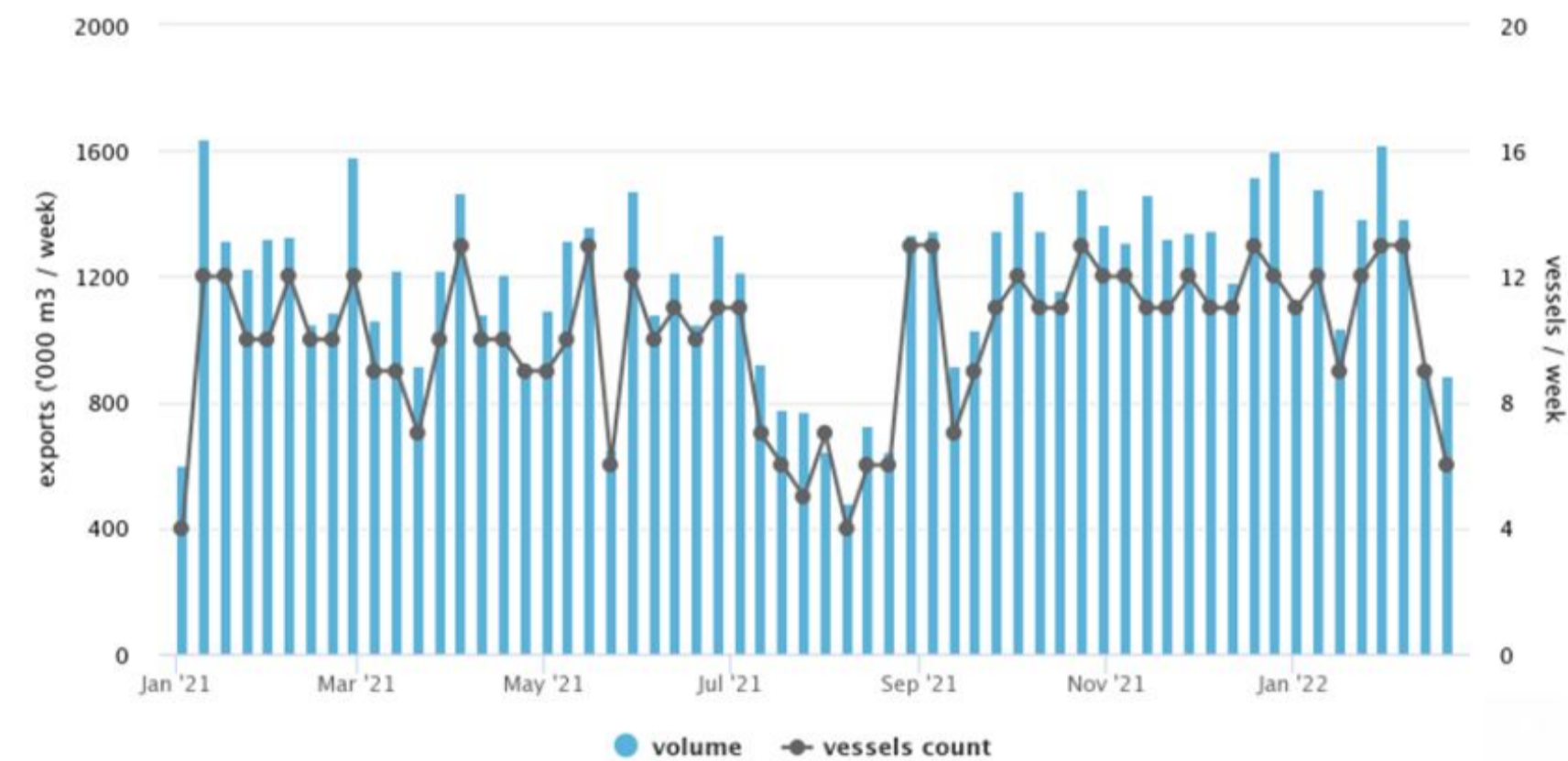
# ... to improve risk and return

## Returns



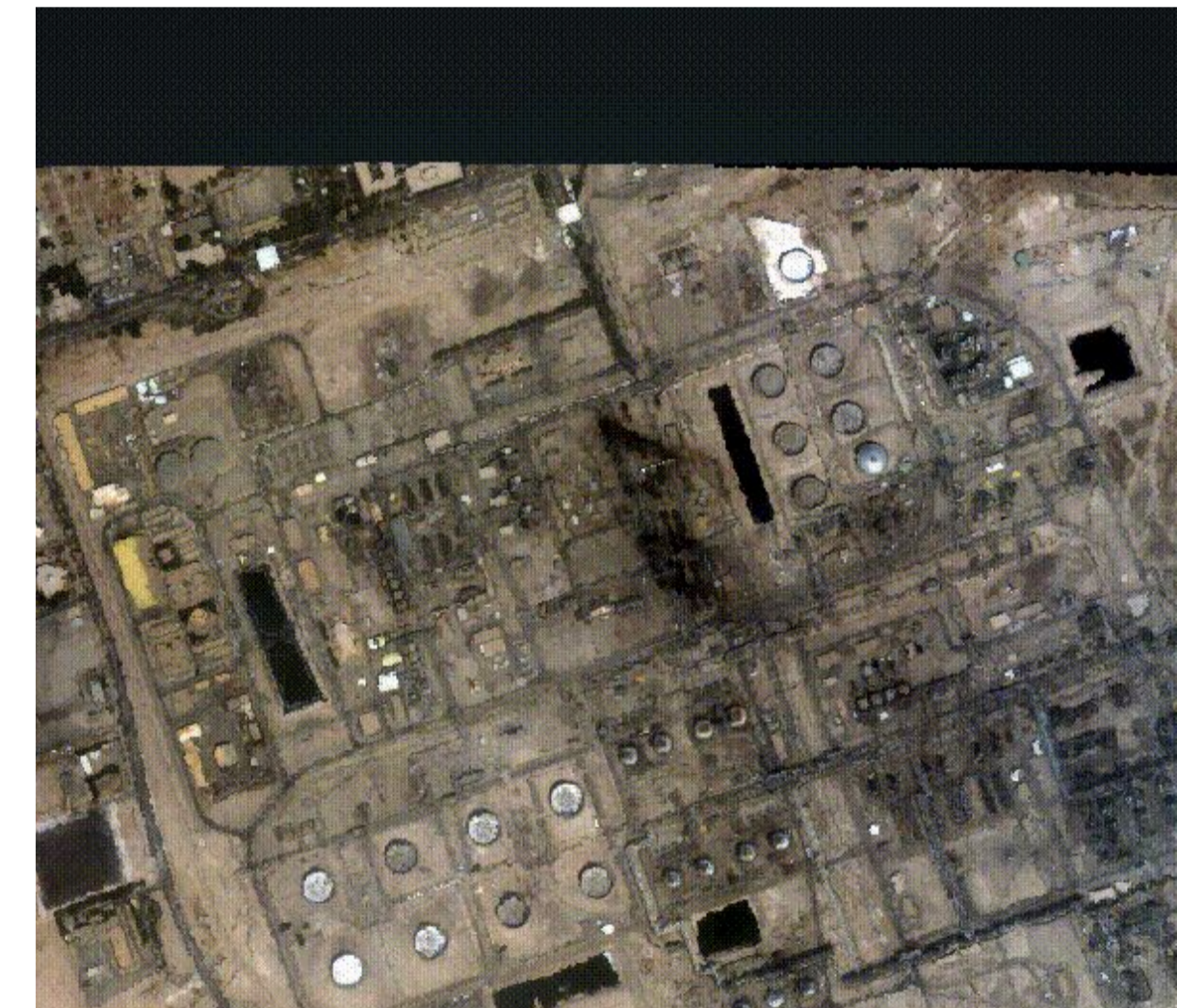
Direct, granular, reliable asset level observation increases precision of **probability distribution** of returns

## Expected risks



Global, real-time and historical asset-level observation detects **deviation from normal** activity

## Unexpected risks



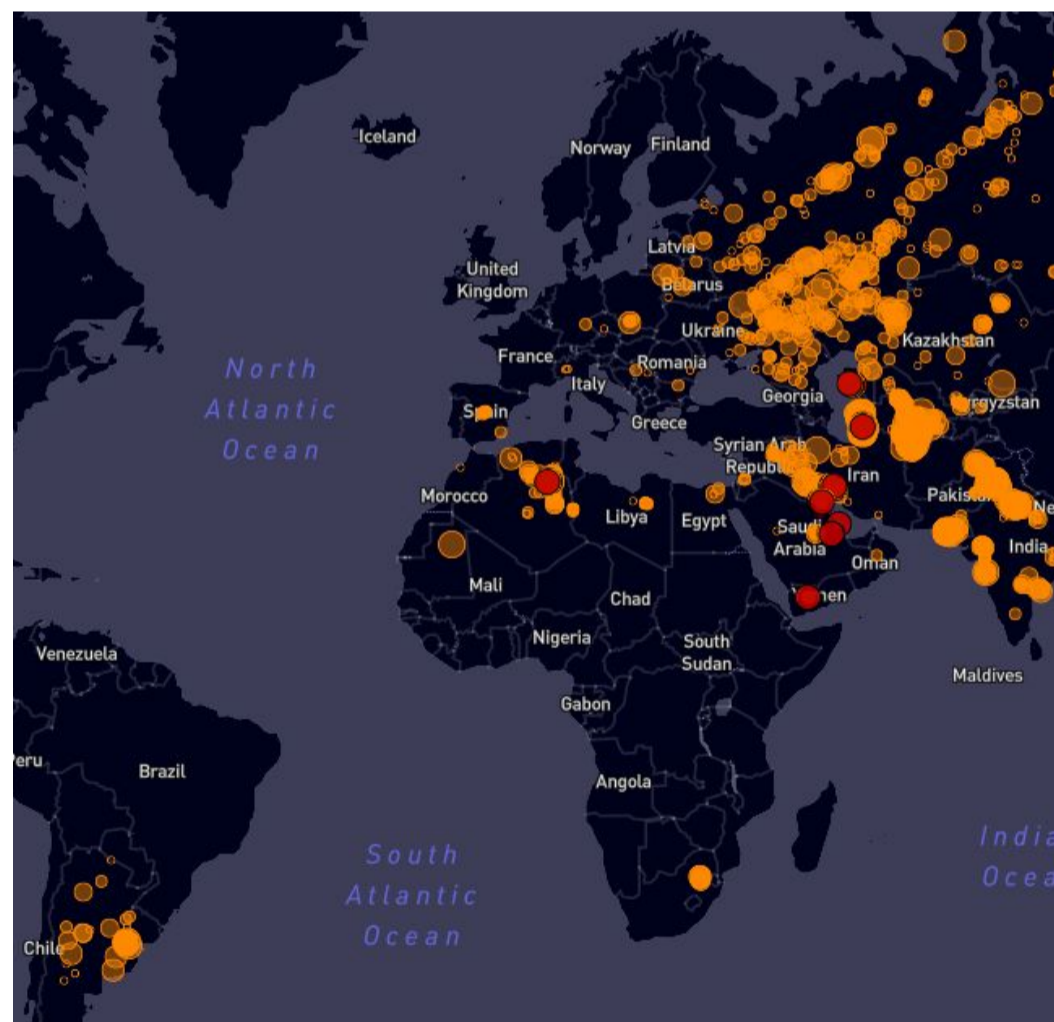
Global coverage helps **predict & quantify potential losses & actual impact** of unexpected events

## Methane emissions monitoring

# Methane Watch for Asset Managers, Private Equity and M&A

### Global coverage

Supported by extensive asset database



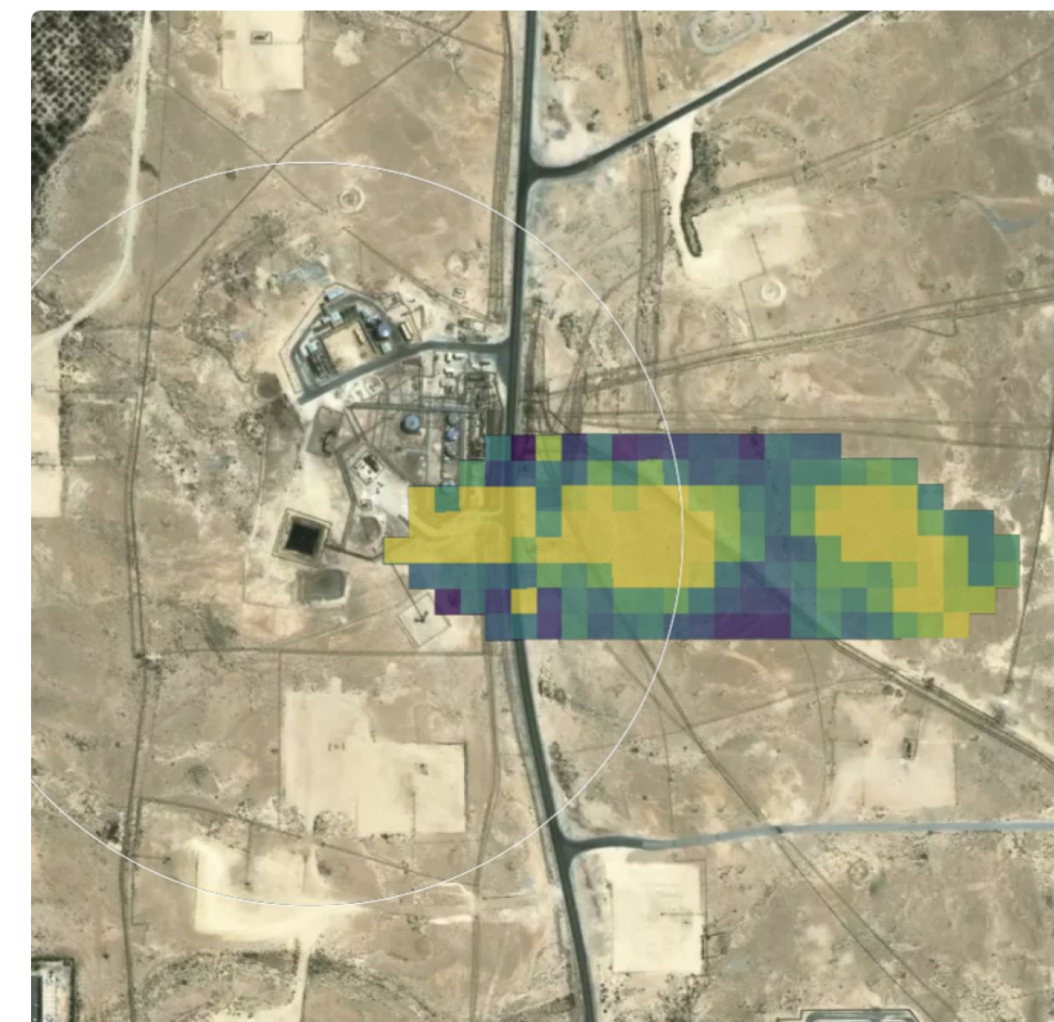
### Temporal resolution

Near real-time updates all year round



### Spatial resolution

20m high-resolution at asset level



### We tell our clients

- Date
- Flow rate
- Coordinates
- Source type
- Operator name

### And can aggregate at

- Company-level
- Portfolio-level
- Country-level
- Sector-level
- Source type-level



THE LEADING  
ENVIRONMENTAL  
INTELLIGENCE COMPANY

**Singapore**

Level 2, 15 Beach Road  
Singapore 189677

**New York**

12 East 49th Street  
NY 10017

**Paris**

33 rue La Fayette  
FR 75009

**London**

3 Waterhouse Square,  
138 - 142 Holborn, London EC1N 2SW

**Houston**

708 Main Street Houston  
TX 77002

**Bangalore**

100 Feet Road Second  
Block, KA 560034